



### **LATTE (F)**

Seal point Siamese, 3 mo  
Reserved temperament; warms up with love. Spay pending. Meet in foster home.



### **RUFF RUNNER (M)**

DSH Tuxedo, 4 mo  
Named after a How to Train Your Dragon character. Snuggly, playful, and loves car rides. Loves kids.



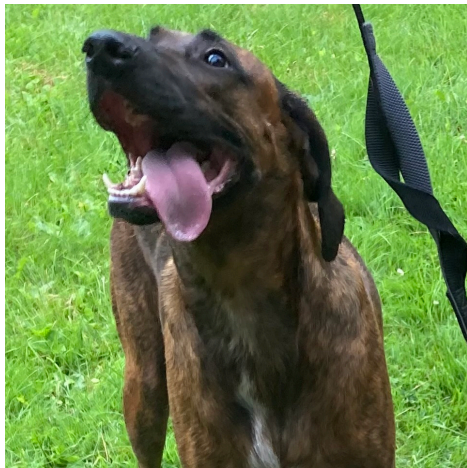
### **ACE (M)**

DSH Grey tuxedo, 4 mo  
Found at Ace hardware. Ace is the sweetest kitty! Great with kids, other cats, and respectful dogs.



### **DART (F)**

DSH Tuxedo, 4 mo  
Named after a How to Train Your Dragon character. Bold, vocal and snuggly! Playful and great with kids.



### **LOKI (M)**

Hound/Plott, 3 yrs  
Good with dogs, cats and kids. Lots of energy and loves everyone! Meet in foster home.



### **SAL (M)**

Sal has one blue eye and a green eye; he's strikingly handsome. Sal is sweet, quiet and loves to cuddle. Adoptable soon. Neuter pending.



### **MOUSE (F)**

DSH Grey tabby, 2 yrs  
Loves people and will follow you around. Unique meow, affectionate and communicative.



### **COTTON (F)**

DLH Grey tabby, 5 mo  
Gentle, petite and loving. Warms up quickly; exceptional purr. Meet in foster home. Spay pending.





### **TIPSY (F)**

DLH Grey tabby, 6 mo

Tipsy loves play and attention; love nips when done. Mild CH. Spay pending. Meet in foster home.



### **GIN (M)**

DLH Grey tabby, 6 mo

Working on confidence around humans. Neuter pending. Meet in foster home.



### **WHISKEY (F)**

DMH Russian Blue mix, 6 mo

Curious and working on confidence around humans. Spay pending. Meet in foster home.



### **EVERLAYNE (F)**

Grey/white tuxedo, 5 yrs

Enjoys pets and purrs. Good with other cats and dogs. Meet in foster home.



### **ENDER (M)**

DSH Tuxedo, 4 mo

Cuddle bug with a loud purr. Good with dogs, cats and busy households. Bonded with Onyx.



### **ONYX (M)**

DSH Tuxedo, 4 mo

Cuddle bug with a loud purr. Good with dogs, cats and busy households. Bonded with Ender.



### **WILMA (F)**

DSH Russian Blue tabby, 3 mo

Bio pending; spay pending



### **FRED (M)**

DSH Russian Blue, 3 mo

Bio pending; neuter pending





**PEBBLES (F)**

DSH Tortoiseshell, 3 mo  
Bio pending; spay pending



**NUBS (F)**

DSH Tortoiseshell, 4 yrs  
This sweetheart loves attention!  
Needs time to warm up in a special  
home full of love.



**ZAPHYRA (F)**

DSH Dilute Tortoiseshell, 3 yrs  
Bio pending.



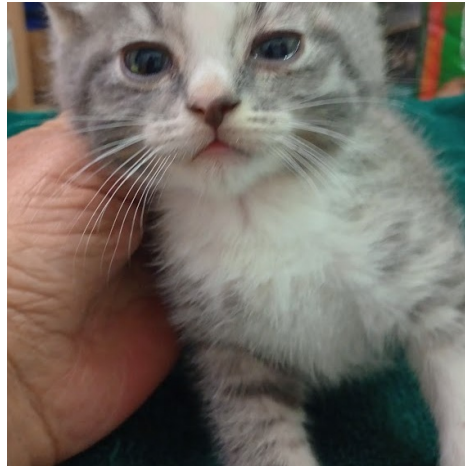
**SNOW (F)**

DSH Dilute Tortoiseshell, 3 mo  
Bio pending; spay pending



**RAIN (F)**

DSH Grey tabby, 3 mo  
Bio pending; spay pending



**CLOUD (M)**

DSH Grey/White tabby, 3 mo  
Bio pending; neuter pending



**HAIL (F)**

DSH Calico, 3 mo  
Bio pending; spay pending



**SUNNY (M)**

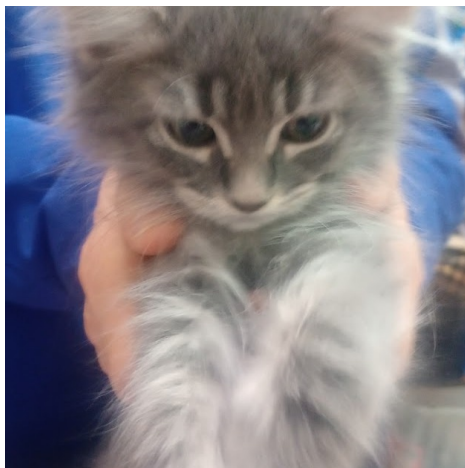
DSH Buff tabby, 3 mo  
Bio pending; neuter pending





### **MICKEY (M)**

DMH Grey/blue tabby, 3 mo  
Mickey is very affectionate and loves to play with wand toys. Bonded with Minnie. Neuter pending.



### **MINNIE (F)**

DLH Grey tabby w/white, 3 mo  
Minnie is inquisitive and measured; she loves attention and playtime. Bonded with Mickey. Spay pending.



### **MOOSE (M)**

DSH Russian Blue, 3 mo  
Moose is adventurous and has beautiful, intense eyes. Brother to Mickey and Minnie. Neuter pending.



### **JASPER (M)**

DMH Tuxedo, 5 yrs  
Jasper is the sweetest cat and a complete love bug. He is mellow, loves to snuggle, and explore.



### **ROSALIE**

DSH Tortoiseshell, 5 yrs  
Super affectionate, loves laps, pets, and treats! Good with kids, not with other cats. Meet in foster home.



### **ISABELLA (F)**

DSH Tuxedo, 6 yrs  
She enjoys mellow days and evening snuggles; suited to a quiet home. Bonded with Pepa. Meet in foster.



### **PEPA (F)**

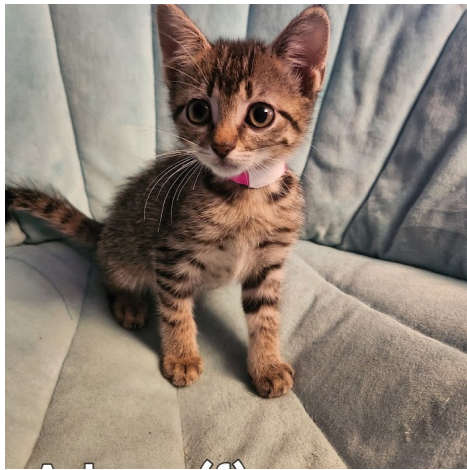
DSH Grey/white tabby, 9 mo  
She enjoys mellow day and evening snuggles; suited to a quiet home. Bonded with Isabella. Meet in foster.



### **STYMIE (M)**

DLH White w/buff, 3 mo  
Affectionate and sweet once comfortable; needs slow introduction. Neuter pending.





**ARLENE (F)**

DSH Brown tabby, 3 mo  
Bio pending.



**Cookie (m)**

**COOKIE (M)**

DSH Brown tabby 4 mo  
Bio pending.



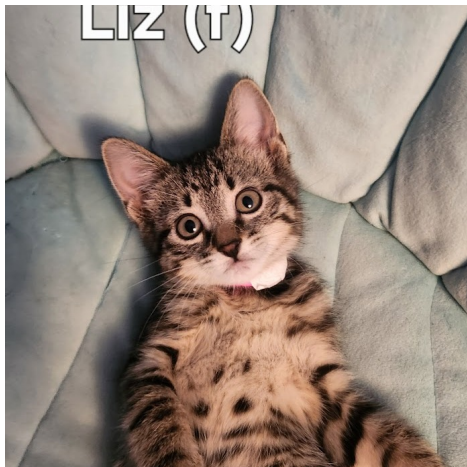
**BROWNIE (M)**

DSH Brown tabby, 4 mo  
Bio pending.



**NERMAL (M)**

DSH Brown tabby, 3 mo  
Bio pending.



**LIZ (F)**

**LIZ (F)**

DSH Brown tabby, 3 mo  
Bio pending.



loving  
sister to Lilly-bean  
gets along with cats, dogs,  
and kids

**LILLY BEAN (F)**

DLH White w/orange, 7 mo  
Lilly Bean is sweet, lovely girl who  
loves other cats, dogs, and with kids.  
She is bonded with Billy Bean.



**BILLY BEAN (M)**

DLH White w/orange, 7 mo  
Billy Bean is a sweet snuggler once  
settled. He is good with cats, dogs,  
and kids. Bonded with Lilly Bean.



**CIRRUS (F)**

DSH Calico, 3 yrs  
Cirrus is affectionate cat who loves  
attention. She likes most cats, is  
good with dogs, and kids.





### **GEMINI (F)**

DSH Calico, 1 yr

Gemini is mellow, sweet, and confident. She loves everyone, including other cats, dogs, and kids.



### **CALLIE (F)**

DSH Calico, 1 yr

Callie is small, quiet and adorable girl who loves attention. She's good with other cats, dogs and kids.



### **SAGE (F)**

DSH Calico, 3 yrs

Sage is a friendly girl who loves attention. She is independent and purrfectly suited to being a single cat.



### **SPEED (F)**

DSH Calico, 2 yrs

Speed is a petite, sweet girl who loves everyone. She's great with kids, other cats, and dogs.



### **OLIVIA (F)**

DSH White w/orange tabby, 7 mo

Olivia is sweet, gentle, playful, and curious. She greets with purrs, and is good with other cats, dogs, and kids.



### **FOXY (F)**

DLH White w/orange, 2 yrs

Foxy is shy at first, and becomes a snugly nibbler once settled. She's good with other cats, kids, and dogs.



### **BABY (F)**

DLH White w/orange, 4 yrs

Baby is sweet, shy and independent. She's good with kids, other cats, and dogs, with slow introductions.



### **DAPHNE (F)**

DLH White w/orange, 2 yrs

Daphne is a beautiful, cautious girl who cuddles once settled. She's good with other cats, dogs and kids.





### **SPANKY (M)**

DSH Ginger tabby w/white, 3 mo  
Love bug, playful and social. Good  
with other animals and kids after  
slow introduction. Neuter pending.



### **BUCKWHEAT (M)**

DLH White w/buff, 3 mo  
Affectionate and sweet once  
comfortable; needs slow  
introduction. Neuter pending.